

DAF EURO6 AdBlue Emulator Installation

DAF EURO 6 ADBLUE CANCEL EMULATOR INSTALLATION

You must attach the emulator to the rear of the silencer under the EAS ECU.

You must first disconnect the NOx sensor cables and connect the emulator cables to the NOx cables.

You must obtain fuseo F22 (e497, 15A)

CAN cables are located at the top of the NOx socket.

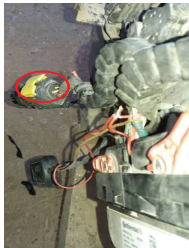
Car side	Emulator side
CAN H ----->	WHITE cable
CAN L ----->	BROWN cable
POWER (+) ----->	RED cable
GND (-) ----->	Black cable

IMPORTANT NOTE: Only the CAN cables are to be connected from the NOx socket as the truck's fuse has been taken, For power connections you need to use ground (GND) and contact (+),

You must clear the error codes from the engine ECU. If you do not have DAVIE software, you can use [DAF Euro 6 DTC Eraser](#).

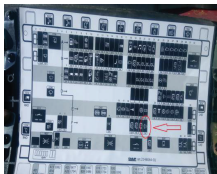
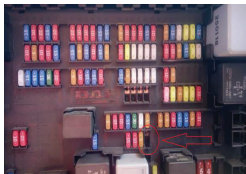
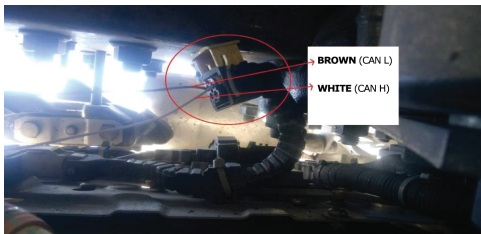
The connection type DAF460/480 is the same but the NOx socket locations are different, The following are shown,

DAF460



DAF EURO6 AdBlue Emulator Installation

DAF460



You should definitely cancel the DPF after installing the AdBlue Removal Emulator