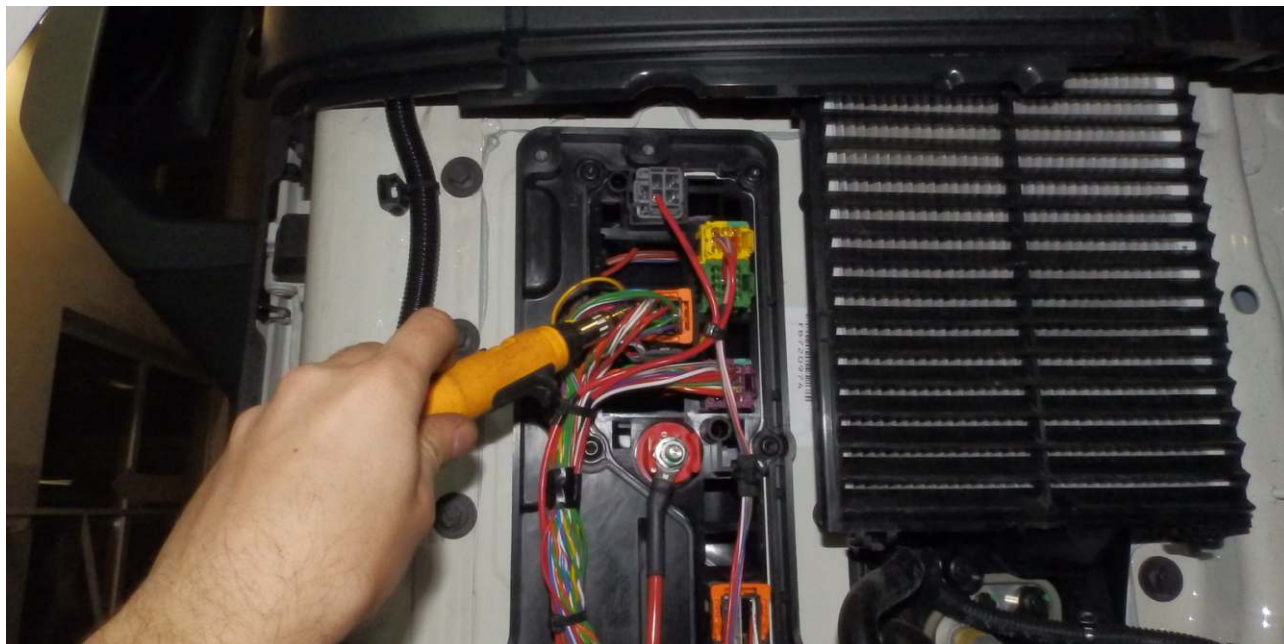


MANUAL

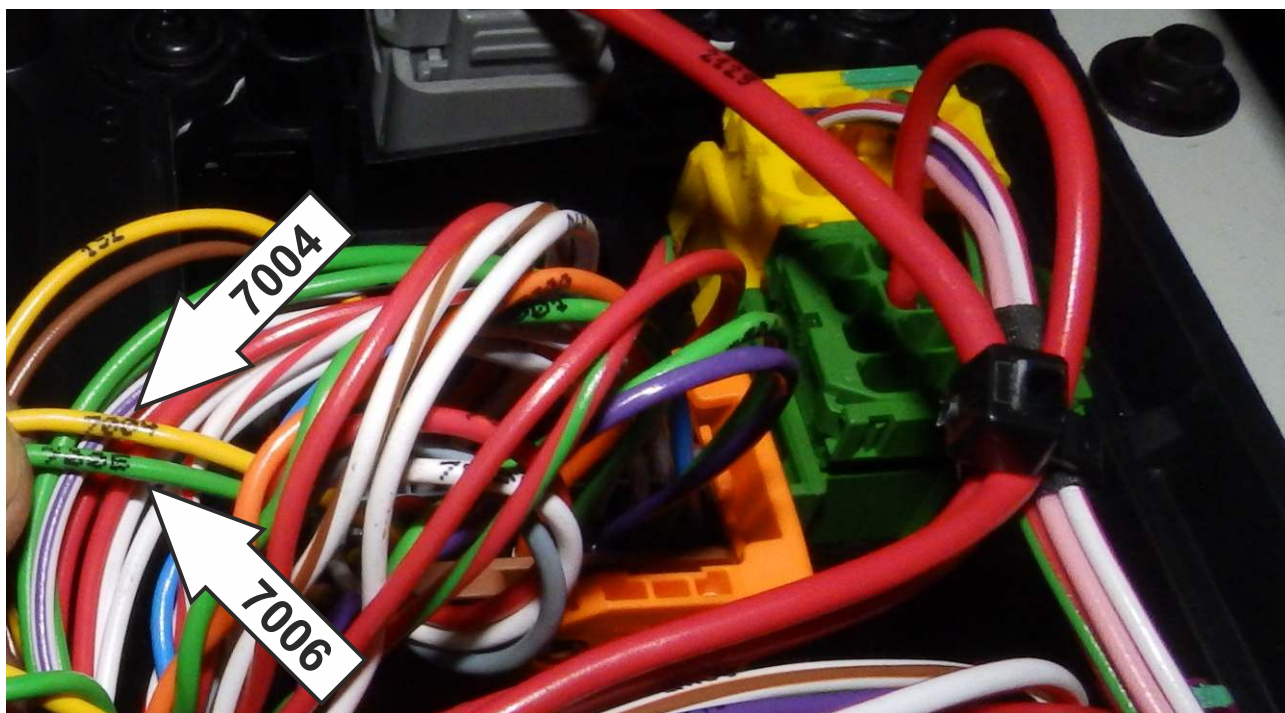
Emulator VOLVO



Instalation emulator for VOLVO Euro 6



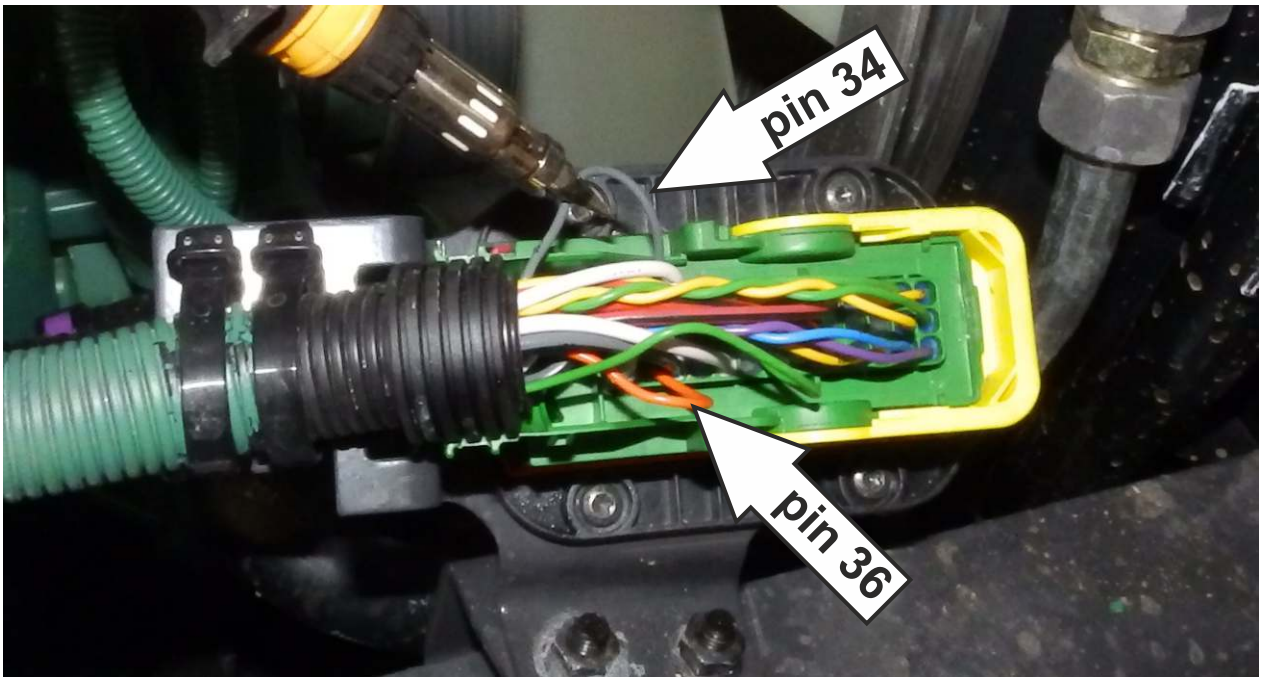
1. Find wire number 7004 (CAN High) and 7006 (CAN Low) located on the front of car, Like on the photo.



2. Connect wires from the emulator as follows:
YELLOW wire from emulator ---> 7004 (CAN High)
GREEN wire from emulator ---> 7006 (CAN Low)



3. On the right side of the frame, locate the plug visibility on the photo.



4. Connect wires from the emulator (two long wires in a black isolation) as follows:

WHITE wire from emulator ---> **GREY** wire to pin nr 34 (CAN High)

BROWN wire from emulator ---> **ORANGE** wire to pin nr 36 (CAN Low)



5. You should connect the power supply (single wires) to the unit.

BROWN wire from emulator - Ground

WHITE wire from emulator - +24V (after the ignition)



6. You should disconnect plug from the pump and remove DPF.
If car have any errors, remove them from ECU